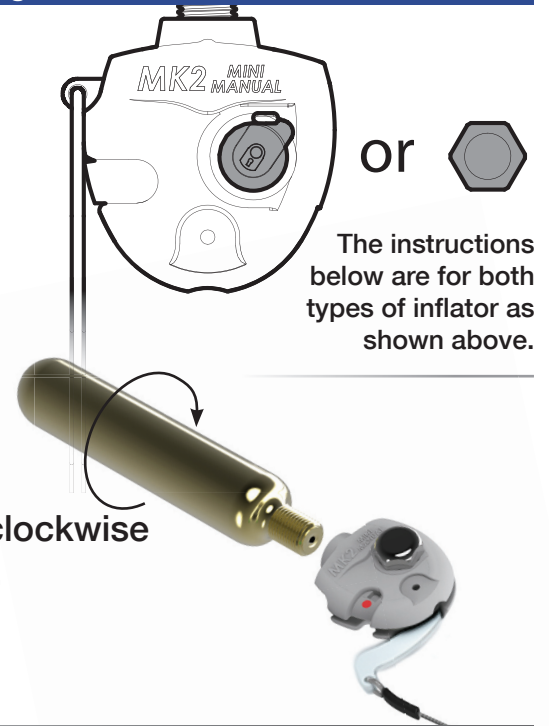




- Do not detach the inflator from the lifejacket.
- Before commencing the re-arming procedure ensure you have the correct re-arming kit with the correct size of CO<sup>2</sup> cylinder and that the lifejacket is dry.
- Keep away from fluids.



### Step 1

Remove the pierced CO<sup>2</sup> cylinder by turning it anti-clockwise and discard it in an environmentally friendly manner.

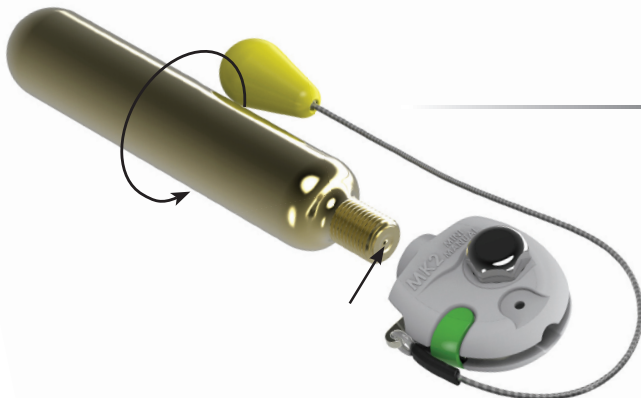
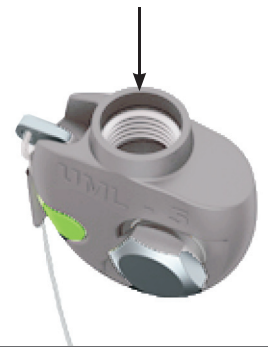


### Step 2

Push the lever back into its slot and clip the new manual indicator in place.

### Step 3

Ensure the black CO<sup>2</sup> cylinder seal is fitted correctly.



### Step 4

Ensure the CO<sup>2</sup> cylinder cap has not been pierced and then screw it clockwise into the UML Mini Manual. Tighten up, hand tight.

- Re-pack the lifejacket according to the lifejacket manufacturers instructions.
- When not in use, store the lifejacket in a cool, dry place out of direct sunlight.

